

infiniCloud – The GPS Security Cloud

infiniCloud is the industry's first GPS cyber-attack monitoring and management system allowing for control and visibility of GPS health and attacks for critical assets whether they are moving (trucks, fleets) or stationary (Critical Infrastructure sites, checkpoints).

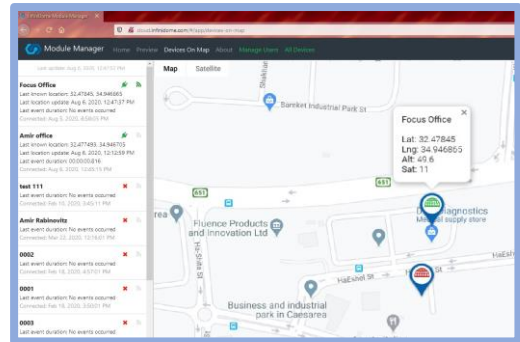
As the Dependency on GPS Grows in every aspect of our lives, the need to monitor and protect it becomes more and more critical. infinCloud is the

first secured real-time cloud-based monitoring system that provides full visibility of the organization's critical assets' most important dependency: GPS.

The Vulnerability of GPS is well known. Orbiting at 20,000km, GPS (GNSS) satellites emit a signal which is incredibly weak when received by GPS receivers (~-125dBm). Jamming or spoofing this signal is simply a matter of overpowering it. This can be done with an inexpensive jammer bought online which floods its signal with white noise, or with a slightly more sophisticated spoofing attack device which can replace the real GPS signal with erroneous data.

Seamless Integration and Flexibility enable ownership of this critical function with minimal investment in integration (data is transmitted independently over cellular), new hardware, or software capabilities. As infinCloud is a cloud-based platform, access to it is possible from any web browser on any device.

Full FCAPS Capabilities and more. infinCloud comes with comprehensive support for the standard FCAPS capabilities: **F**ault management and handling, **C**onfiguration, **A**ccounting (Inventory) management, **P**erformance management, and **S**ecurity management. It also includes a geographical map that displays location and status of all monitored devices in real-time and a dashboard reporting of current GPS (GNSS) status, cellular signal quality, and detailed GPS attack information.



Features & Benefits

- Cloud based architecture accessible from any web browser
- Standalone: No integration required *
- Continuous GPS (GNSS) monitoring
- Continuous cellular quality monitoring
- Detailed attack data:
 - Duration
 - Location (of module)
 - GPS attack strength *
- Remote configuration capability
- Reports generation **
- Spoofing detection capabilities **

* Requires GPSensor

** Will be included in next infinCloud major release

